

Performance Bulletin

YPB#: 02-140-WAR-B

Test Date: 8-28-02



F115 TXRB

Boat: V1890 Eagle BT XST

Length:	18' 3"
Beam:	90"
Weight:	1,400 lbs.
Max H.P.:	135
Fuel Capacity:	40 gals.
Weight As Tested:	2,575 lbs.

Engine: F115TXRB

Horsepower:	115
Displacement:	106.2 cu. in.
Weight:	412 lbs.
Gear Ratio:	2.15:1
Mounting Height:	#3
Propeller (Dia/Pitch):	13 1/4 x 18 GYT
Propeller Part #:	MAR-GYT3B-V4-18

Performance Data

RPM	MPH	GPH	MPG	Db
1000	3.9	0.7	5.57	67
1500	5.3	1.2	4.42	69
2000	6.5	1.6	4.06	74
2500	7.8	2.3	3.39	78
3000	10.3	3.2	3.22	80
3500	24.4	3.4	7.18	82
4000	28.9	4.2	6.88	88
4500	33	5.5	6.00	89
5000	36.9	7.3	5.05	91
5500	41.5	9.1	4.56	92
5900	44.3	9.9	4.47	94

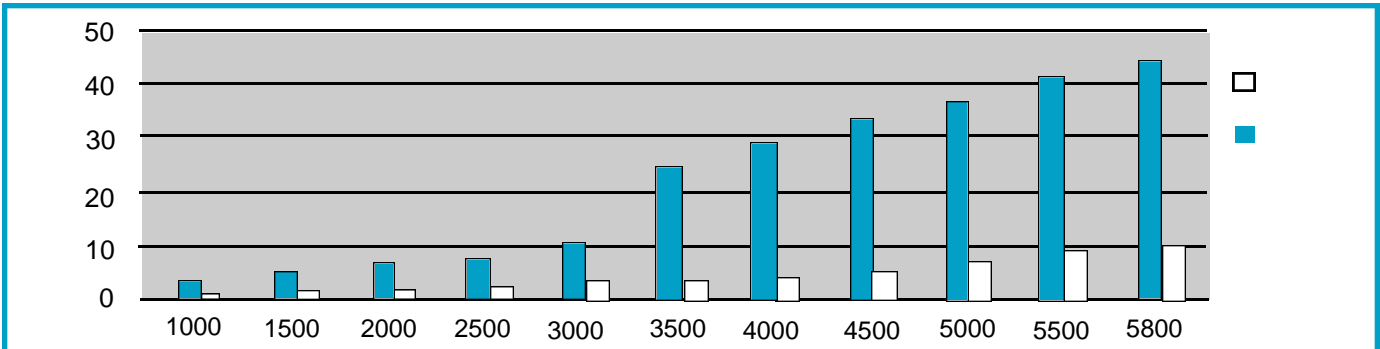
Seconds to Plane: 5.14

Comments: Test weight includes 30 gallons of fuel, one group 27 series battery and gear bag.

Test Conditions

No. of People:	2
Air Temperature:	84°
Water Temp:	69°
Elevation:	1,050'
Wind Velocity:	5-10 MPH

Note: Data may vary due to changes in weather, elevation, load and boat bottom conditions. Fuel data gathered with Yamaha Fuel Management System. Speed data gathered with GPS receiver.



Test performed and certified by Yamaha application engineers